

JFS

A PUBLICATION FROM JEWISH FAMILY SERVICE OF THE DESERT

VOICES
WINTER 2010



HOUSE & GARDEN WALK SET FOR MARCH 14

IN THIS ISSUE

HOUSE & GARDEN WALK

JFS COUNSELING PROGRAM

ONE NIGHT ONLY

LUNCH & TEA TIME TALKS

JFS VOLUNTEER JUDY BECKER

Tour Features Three of Architectural Digest's Top 100 Designers

JFS showcases five spectacular estates in Rancho Mirage at the 12th Annual House & Garden Walk on Sunday, March 14, 2010. The tour begins at noon and ends at 4pm. Tickets are \$75 per person available only through JFS.

The designers of three of the homes on this year's House & Garden Walk tour have been named among Architectural Digest's "Top 100 Designers", including Michael S. Smith, who was recently selected as the designer for the Obama White House.

continues on page 3



12th ANNUAL
HOUSE &
GARDEN WALK

www.jfsdesert.org

Refreshments For Your Perspective

Participants who attend the monthly JFS "Lunch Time Talks" and "Tea Time Talks" often leave with more than their hunger satisfied. The popular series is designed to offer people new approaches to dealing with issues they confront on a daily basis.

The series is led by Helene Pine, Ph.D., a psychotherapist and Marriage and Family Therapist. The "Talk" series examines some of the most pertinent topics facing members of the community in a light hearted, yet thought provoking manner. Sessions are designed to intellectually and creatively engage participants. "I have a very positive nature and like to impart that on other people," notes Dr. Pine. "My goals are to help people to relate better, teach interpersonal skills and enhance their personal well-being."

Dr. Pine selects topics by taking the pulse of the community and getting a consensus on issues of general interest. The many topics discussed at the sessions have included The Sting of Criticism, Wire Your Brain For Happiness, The Joys and Oys of Parenting, and Shift Your Attitude, among many others.

The "Lunch Time Talks" began eight years ago, when a local medical group requested that JFS present a noon time program for professionals in the Palm Springs area. The series quickly gained popularity and opened up to the community at large. The sessions almost always reach their capacity of 45 participants. A lunch is served at each session.

In order to broaden the opportunity for participation, "Tea Time Talks" were added in 2005 in Sun City, with monthly attendance averaging more than 70 participants. Refreshments include tea and cookies.

There is no charge to attend the sessions and everyone is welcome. The "Talk" series will go on hiatus after the March sessions and resume again in the fall. For more information, contact JFS at (760) 325-4088.



*JFS President Judy Wallis &
Jewish Federation President
Roberta Nyman*

Patron Party

On December 10, 2009, the Seventh Annual Patron Party was generously hosted by Helene Galen at her lovely Rancho Mirage home. JFS wishes to thank Helene, along with committee chairs Carol Fragen and Pat Weiss, and committee members Barbara Fromm, Don Levy, Barbara Keller, and Judy Wallis, for helping to make this one of the most successful Patron Party events in JFS history.



*Maurice Paperny
& Carol Feinstein*



Jerry & Georgia Fogelson



Helene Galen & Peggy Greenbaum

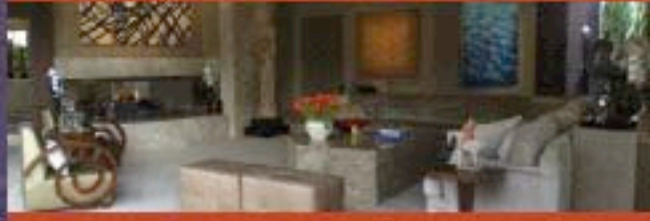
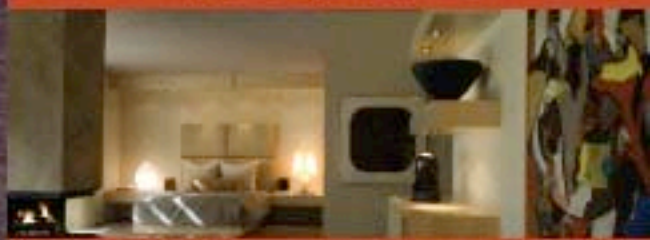
House & Garden Walk Set for March 14th

The 12th Annual House & Garden Walk is co-chaired by Deanna Pearl and Joyce Wolff. "We are excited to announce that two of the estates will shortly be featured in *Architectural Digest*," reports Ms. Pearl. "One of the homes has been featured in *Another 100 of the World's Best Houses* by Robyn Beaver."

More than 600 connoisseurs of architecture, art, interior design and landscaping attend the House & Garden Walk each year. The event has a reputation for showcasing the desert's most prestigious architecture, design concepts, and museum caliber art collections. Kevin Katz and Babs Schrage co-chair the House & Garden Walk program book.

Each of the homes on the 2010 tour has been carefully selected for its unique approach to "living with art." The tour will feature works by classic masters such as Renoir and Botero, along with contemporary artists, photographers, and sculptors including Julian Schnabel, David Hockney, Fletcher Benton, Nicholas Africano, Deborah Butterfield, Jean Dubuffet, Giorgio Cavallon, Olja Dobrovic, Ed Moses, and Johann Friedrich Overbeck, among others.

For more information or to purchase tickets, contact JFS at (760) 325-4088.



JFS Counselors Spend Their Days Helping People

JFS Director of Clinical Services Gladys Becker recently strategized with one of her therapists about a particularly challenging case. A sixteen year old boy whose parents are unable to care for him keeps running away from the relatives he's been sent to live with. "Running away is a cry for help," explains Gladys.

His relatives are both alcoholic and violent at times and refuse treatment of any kind. Working with Child Protective Services, his caring and supportive therapist is developing a plan to transition this young man to foster care.

"Sometimes it's better for a child to live with foster parents than in a dysfunctional family setting," notes Gladys. "With on-going therapy and a solid environment, this boy has a chance to reach his potential."

If you ask Gladys what she likes about her job, she'll tell you "if you can spend the day helping people, you feel wonderful." Gladys and her colleagues at JFS spend thousands of hours each year helping people.

JFS provides a wide range of counseling services to individual adults, couples, families, children, adolescents, and seniors. According to Gladys, "Our Counseling Program deals with a diversity of issues and helps people face life's challenges through skills building, coping strategies and other methods." These issues include mental illness, anxiety, depression, partner/marital conflict, divorce, death and grieving, domestic violence, alcohol and drug addiction, illness, job stress, child abuse, and senior abuse, among others.

In addition to Gladys Becker, a Licensed Clinical Social Worker and a Board-certified Diplomat, JFS retains 12 full and part time therapists with a variety of credentials, including Masters in Social Work, Masters in Family Therapy, and Doctorate in Psychology. JFS is also a training ground for masters' level interns and trainees working on their hours for licensing. A local psychiatrist volunteers his services several hours a week to ensure that uninsured clients may receive needed evaluations. Bi-lingual counseling is available for those who speak Spanish.

Counseling is available to people of any means throughout the Coachella Valley on a sliding fee scale and no one is refused service based on inability to pay. JFS takes Medicare, Medi-Cal, and many insurance plans. Counseling services are provided in the JFS Palm Springs and Palm Desert offices by appointment. For more information or to schedule an appointment, call JFS at (760) 325-4088.

Volunteer Focus: Judy Becker

Every Monday at 10 am, JFS volunteer Judy Becker visits the Mirage Inn in Palm Desert, a senior living facility. She spends an hour with facility residents leading a group she calls "Conversations with Judy". The participants, ranging in age from 80 - 95, gather to discuss everything from current events to what's going on in their lives. The group provides participants with an opportunity for social interaction, as well as a safe place to discuss their feelings.

Judy began volunteering at JFS three years ago. She met with Linda Zweig, Coordinator of Volunteer Services, to discuss how she could best contribute. With her background in counseling and affinity to work with seniors, the group sessions were a natural outlet for her volunteer activities.

To Judy, the most rewarding aspect of volunteering at JFS is the ability to help people. "You get so much more out of volunteering than you give," explains Judy. For people who are interested in volunteering Judy advises, "Get in touch with Linda. She'll find the right place for you."

For more information on volunteer opportunities at JFS, contact Linda Zweig at (760) 325-4088.



Event Co-Chair Carol Frager &
JFS Vice President Barbara Fromm

Elaine & Jerry Morgan



Ellie & Phil Wynn

Barbara & Mike Rosmo

JFS Tribute Cards



\$15 each or Eight for \$100

You can support the vital work of JFS while honoring your family and friends with beautifully designed, contemporary cards for all occasions:

Send Tribute Cards for

- Anniversary
- Adoption
- Birth Announcement
- Birthday
- Bar/Bat Mitzvah
- Congratulations
- Get Well
- Graduation
- Memorial
- Thank You



VEHICLE DONATION PROGRAM

You can donate your car, truck, boat, motorcycle or other vehicles through the JFS vehicle donation program. Your donation benefits the services of JFS in our community and can provide tax benefits for you.

Our representative will schedule a convenient pick up and provide confirmation of your donation.

For more information, call
(877) 537-4227

Or email
donations@charitableautoreources.com

Dear Friends,

As we are in the midst of "season", JFS is in the midst of a multitude of activities. The "House & Garden Walk" will be held on March 14th. More than 125 of you will be serving as docents. Over the years, many of our board members have come to us after working on the Walk. April 8th will bring us our third "One Night Only" at the McCallum Theatre, produced by Michael Childers. This spectacle is wonderful entertainment and also provides JFS with tremendous exposure and significant revenues to fund our critically-needed programs.

While I speak of "season", I must tell you that JFS knows no season. Every day of every year is the same. We are dedicated to serving those in need; those who are hurting. Look over our program list and you will see the variety of services that we provide.

This will be my last letter to you as President of JFS. In April I will hand over my gavel to Don Levy whom I know will be a great leader. Of course, Dan Bass is our constant, and as Executive Director our future is certain.

This has been a fulfilling two years for me and I wish to thank our wonderful Board of Directors, the exceptional staff and all of you who continue to support JFS and the work that we do.

Sincerely,



Judy Wallis
President, Board of Directors



Michael Childers Presents 'One Night Only' to Benefit JFS

Musical Extravaganza Graces the McCallum Stage on April 8th

On Thursday, April 8th, producer Michael Childers will assemble a number of Broadway and Hollywood's shining stars on the stage of the McCallum Theatre for the Performing Arts to reprise the extraordinarily popular "One Night Only". This is the third consecutive year that the production will benefit Jewish Family Service of the Desert. This year's theme is "A Tribute to Hollywood's Greatest Music".

General admission tickets are \$75, \$95, and \$140 and are available through the McCallum Theatre box office at (760) 340-ARTS or at www.mccallumtheatre.com. The performance begins at 6:30pm. The last two productions benefiting JFS have sold out so get your tickets quickly.

"One Night Only" has developed a reputation for delivering a powerful evening of entertainment featuring the best of Broadway and Hollywood performers. Among the stars appearing in this year's production are Polly Bergen, Phillip Attmore, Liz Callaway, Loretta Devine, Nancy Dussault, Danny Gurwin, Sam Harris, Megan Hilty, Alix Korey, Carol Lawrence, Rita McKenzie, Valarie Pettiford, Lee Roy Reams, Nita Whitaker, John Lloyd Young, and Rex Reed as Master of Ceremonies. All performers donate their time so appearances are subject to availability.

A limited number of VIP packages are also available for \$375 each, including premiere seating and a VIP reception with the cast following the performance at Piero's Acqua Pazza in the River. VIP Packages are only available through JFS at (760) 325-4088.



Polly Bergen



801 East Tahquitz Canyon Way, Suite 202, Palm Springs, CA 92262-6990

Non Profit Org
POSTAGE PAID
PERMIT #149
Palm Desert CA

Count on us...for life

BOARD OF DIRECTORS

Officers

Judy Wallis, President
Don Levy, President-Elect
Barbara Fromm, Vice President
Barry Kaufman, Treasurer
Marc Kashinsky, Secretary

Directors

Carol Feinstein	Jane Sallo
Bill Fisher	Jeanne Sassoon
Carol Fragen	Joe Scher
Annabel Goldstein	Babs Schragar
Ed Gubman	Arny Shapiro
Kevin Katz	Royal Taxman
Barbara Keller	Howard Vogel
Bertel Lewis	Joyce Wolff
Deanna Pearl	

Immediate Past President

Sam Oberman

Past Presidents

Violet Felix	Merv Lemmerman
Murray Felson	Dee Dee Raskov
Barbara Pitts	Martin Russell
Sam Rosenthal*	Molly Saltman
Jane Sallo	

Honorary Board Members

Eve Chaiken	Bernice Posner*
Joyce Freund	Joan Rose
Tom Ostwald	Marion Schaefer
Maurice Paperny	*Deceased

Executive Director

Daniel Bass, LCSW, MAJCS

CONTACT US

Main Office

801 E. Tahquitz Canyon Way, #202
Palm Springs, CA 92262-6990
(760) 325-4088 Fax: (760) 778-3781
Email: info@jfsdesert.org
www.jfsdesert.org

Satellite Office

72-925 Fred Waring Drive, #202
Palm Desert, CA 92260
(760) 568-2441

OUR MISSION IS TO PROVIDE FOR THE SOCIAL SERVICE NEEDS OF THE JEWISH AND GENERAL COMMUNITY THROUGHOUT THE GREATER COACHELLA VALLEY WITH A COMMITMENT TO PROMOTE THE WELL-BEING OF PERSONS OF ALL AGES, INCOMES AND LIFESTYLES.

SERVICES & PROGRAMS

Counseling for Individuals,
Couples & Families
Substance Abuse Counseling
Solutions for Seniors
JFS Express Transportation
Big Pal/Little Pal

KidsFirst School Counseling
Support Services for the
Homeless
Community Education
Volunteer Programs

Jewish Family Service of the Desert is a beneficiary of the Jewish Federation of Palm Springs & Desert Area, the United Way of the Desert, and a member of the Association of Jewish Family & Children's Agencies.

JFS IS A CARING RESOURCE FOR PEOPLE WHO ARE SEEKING GUIDANCE, COMFORT, SUPPORT AND HOPE DURING DIFFICULT TIMES.
COUNT ON JFS TO BE THERE FOR YOU WHEN LIFE CHANGES.